

**DOORI**

GRP SECTIONAL WATER TANK

## WE CONTAIN YOUR WATER

### WHO WE ARE

DOORI, founded in 1998 in South Korea and incorporated in 2005, is a global supplier of water storage tanks.

We offer a range of water tanks in various sizes and types, including GRP/FRP and STS panels. Our core product is the GRP/FRP sectional water tank. Utilizing precise techniques and experienced skills, we deliver durable and hygienic water tanks for fresh water storage.

DOORI manufactures water tanks that adhere to global standards and are validated by certifications. We continually innovate with eco-friendly research and development to remain industry leaders.

Our commitment is to satisfy our customers by providing high quality products, flawless installation, and customer-centric service.

Thank you.





# HISTORY

---

<b>2024</b>	02	Awarded 'Gyeongbuk Governor's award'
	02	Awarded 'Public Procurement Service Commissioner's award'
<b>2023</b>	11	Participated 44th Dubai International Construction Material Show (BIG 5 Dubai)
	08	Participated THAIWATER exhibition
<b>2022</b>	10	Certified 'ISO 45001 Safety, Hygiene, and Management System'
	06	Selected 'Main-Biz' (Management Innovation) (KR)
<b>2021</b>	03	Selected 'Excellent Products by Group Standard' (KR)
	01	Selected 'Family Friendly Corporations' (KR)
<b>2020</b>	12	Registered as Samsung C&T Cooperator
	06	Certified 'Group Standard Renewal' (KR)
	04	Opened Branch office in Seoul/Incheon
<b>2019</b>	12	Selected 'Gyeongbuk PRIDE Enterprise' (KR)
	12	Awarded 'Best Venture Company' (KR)
	11	Certified 'Q-MARK' (KR)
	09	Selected 'Leading Company in Water Industry' (KR)
	07	Selected 'Promising Small Giant Business of Export' (KR)
	07	Selected 'Inno-Biz' (Technical Innovation) (KR)
	06	Selected 'Promising Company for Overseas Procurement market (G-PASS)' (KR)
	05	Certified 'STS, PDF Water Tank In-house Production' (KR)
	05	Certified 'High value-added Conversion and Development Support Project' (KR)
	04	Selected 'Small Hidden Champion' (KR)
	03	Participated HVACR VIETNAM 2019
	01	Selected 'Promising Small Business' (KR)
	01	Achieved Export \$200 million in 2018
<b>2018</b>	11	Participated 39th Dubai International Construction Material Show (BIG 5 Dubai)
	06	Registered First Patent
	04	Selected 'Technology Specialized Enterprise' (KR)
<b>2017</b>	11	Participated 38th Dubai International Construction Material Show (BIG 5 Dubai)
	09	Certified 'SMC Water Tank Group Standard' (KR)
	06	Started GRP Water Tank Panel In-house Production
	04	Established Factory 2
	01	Certified 'ISO 14001 Environment Management System'
<b>2016</b>	11	Participated 37th Dubai International Construction Material Show (BIG 5 Dubai)
	10	Started Overseas Export
<b>2015</b>	12	Certified 'WRAS' (UK)
	10	Enrolled 'Korea International Trade Association'
	07	Selected 'Venture Enterprise' (KR)
	06	Certified 'Korea Sanitation and Safety (KC)' (KR)
<b>2014</b>	11	Established Corporate-affiliated Technical Laboratory
	10	Headquarter & Factory Expansion
	03	Certified 'ISO 9001 Quality Management System'
	02	Selected 'Management Innovated Small Business' (KR)
<b>2012</b>	07	Headquarter relocation
<b>2007</b>	05	Registered as Lotte Construction Cooperator
<b>2005</b>	09	Incorporation Transition
<b>1998</b>	04	DOORI established



# FACTORY

## FACTORY1



STEEL ACCESSORIES PRODUCTION + HEAD OFFICE  
3,300sqm



STEEL ACCESSORIES WAREHOUSE



STEEL MATERIALS FABRICATION

## FACTORY2



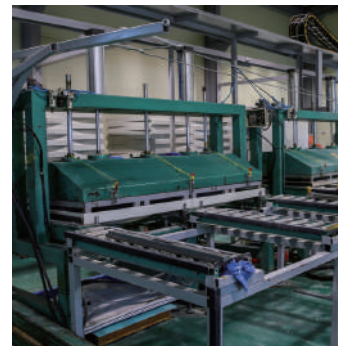
GRP PANEL PRODUCTION  
3,629sqm



PRESS LINE WITH AUTO-FEEDING MACHINE



AUTO-SLOTTING MACHINE



INSULATION ROOM

# WHY GRP WATER TANK ?

---



**CLEAN AND SAFE**



**USABLE SPACE MAXIMIZED**



**STRONG AND DURABLE**



**LIGHTER THAN STEEL TANK**



**HIGH WATER TIGHTNESS**



**CORROSION RESISTANT**



**EASY INSTALLATION**



**0% LIGHT TRANSMISSION (PREVENT ALGAE)**



**REASONABLE PRICE**



**COST SAVING MAINTENANCE**

## WHY DOORI ?

---

### 20 YEARS COMPANY HISTORY

ACCUMULATED KNOW-HOW FROM EXPERIENCES OF 20 YEARS

---

### ONE-STOP SYSTEM

FAST RESPONSE FROM TANK DESIGN TO PRODUCT FINISHING

---

### STREAMLINED WORKFLOW

AUTO-ROBOT SYSTEM OPERATION TO ALL PANEL PRODUCTION

---

### TECHNICAL LABORATORY

CONTINUOUS PRODUCT DEVELOPMENT BY DEDICATED TECHNICIANS  
STRUCTURAL ANALYSIS THROUGH FEM 3D SIMULATION  
HYDROSTATIC PRESSURE TEST

---

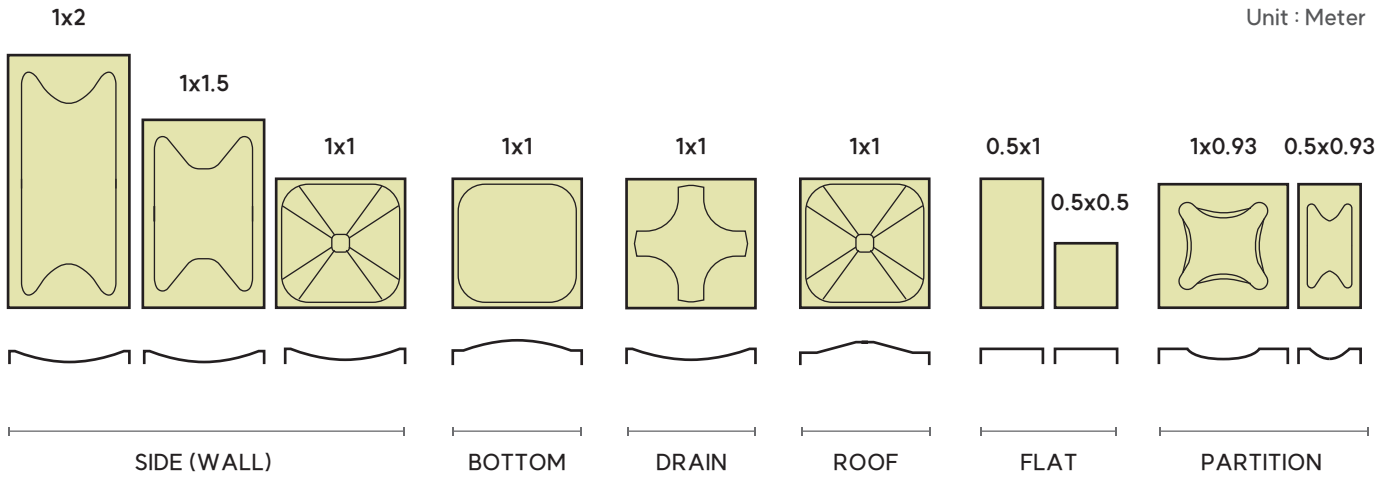
# GENERAL TANK SPECIFICATIONS

<b>PANEL</b>	<b>Material</b>	Unsaturated PE resin + glassfiber + agents
	<b>Color</b>	Ivory (Light beige)
	<b>Insulation type</b>	Non-insulated / 25mm-insulated / 40mm-insulated
	<b>Insulation material</b>	Poly Urethane Foam
	<b>Insulation cover</b>	PE, ABS
	<b>Manhole</b>	Non-insulated, Lockable door
	<b>Size &amp; Shape</b>	Refer to the next page
<b>STEEL SKID BASE</b>	<b>Material</b>	HDG
	<b>Type</b>	75 Angle (for 1.0~2.5mH tank)
		125 Channel (for 3.0~4.5mH tank)
150 Channel (for 4.5~5.0mH tank, by request)		
<b>REINFORCEMENT</b>	<b>Type</b>	Basic (for 1mH tank, outside Angle bar only)
		Internal (Tie-rod layers tank inside)
		External (Steel frames tank outside + Roof pole lines)
		Combined (Tie-rod layers tank inside + Square pipes tank outside + Roof pole lines)
<b>INTERNAL ACCESSORIES</b>	<b>Steel parts</b>	Angle bar, Flat bar, Brackets, Tie-rod, Bolt set (STS304 / STS316)
	<b>Other parts</b>	Ladder (GRP / STS304 / STS316) Roof support (GRP)
<b>EXTERNAL ACCESSORIES</b>	<b>Steel parts</b>	Angle bar, Flat bar, Brackets (HDG), Bolt set (HDG / STS304 / STS316)
	<b>Other parts</b>	Ladder (HDG / STS304 / STS316)
<b>OTHER ACCESSORIES</b>	Air vent (50A / 100A ABS with mesh insect guard)	
	Sealing tape : PVC / EPDM	
	Silicone	
	Level Indicator (Aluminum + Urethane hose)	
	Steel Base Frame (HDG) : Normal type / Height adjustable type	
	Hoop guard and Handrail (HDG / STS304 / STS316)	
	Socket (Brass)	
	Flange (ABS / FRP)	

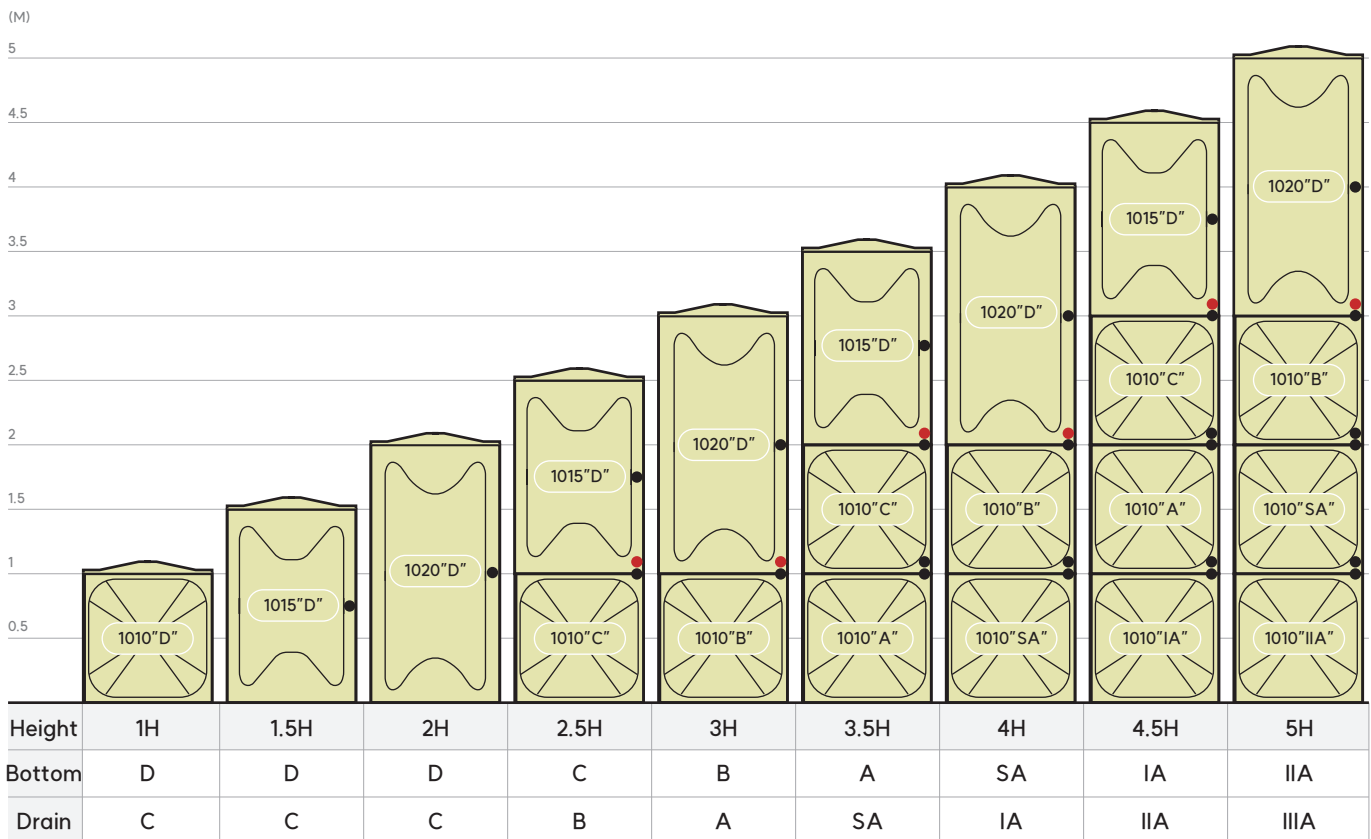


# PANEL SIZE

Unit : Meter



# WALL PANEL COMPOSITION BY HEIGHT



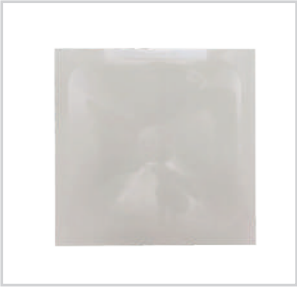
- Panel composition can vary by the sites and buyer's requests.
- Each panel grade has specific thickness to endure the hydrostatic water pressure.
- For Internal reinforcement system, tie-rods can be added on marked ● by buyer's request.



# PANELS



MANHOLE1010



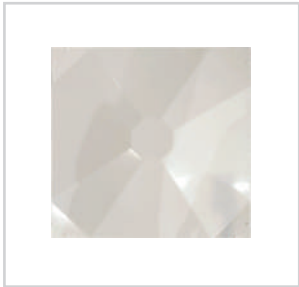
WALL1010



BOTTOM1010



DRAIN1010



ROOF1010



WALL1015/1020



PARTITION1093



PARTITION0593



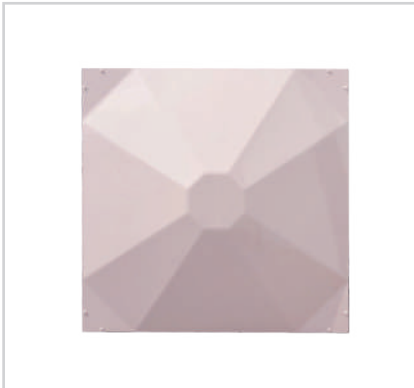
FLAT 0505/0510/1010



NON-INSULATED OUTSIDE  
(NO COVER)



INSULATION OUTSIDE  
(PE/ABS COVER)



ANTI-BACTERIAL  
(COLOR : LIGHT PINK)

# PANEL PHYSICAL PROPERTIES

TEST ITEM	UNIT	SAMPLE	RESULT	TEST METHOD
Tensile Strength	Mpa	-	101	KS F 4811 : 2019
Flexural Strength	Mpa	-	179	KS F 4811 : 2019
Flexural Modulus of Elasticity	Mpa	-	14 269	KS F 4811 : 2019
Glass Fiber Content	%	-	31	KS F 4811 : 2019
Barcol Hardness	-	-	61	KS F 4811 : 2019
Water Absorption	%	-	0.1	KS F 4811 : 2019
Light Transmission	%	-	0	KS F 4811 : 2019
Thermal Conductivity	W/(m·K)	-	0.021	KS L 9016 : 2010
Flammability	mm/min	-	10	UL 94 : 2023
Hydrostatic Pressure	-	-	No defects	SPS-KPS M 3001-0839 : 2019

· Test Results can be different by yearly updates.

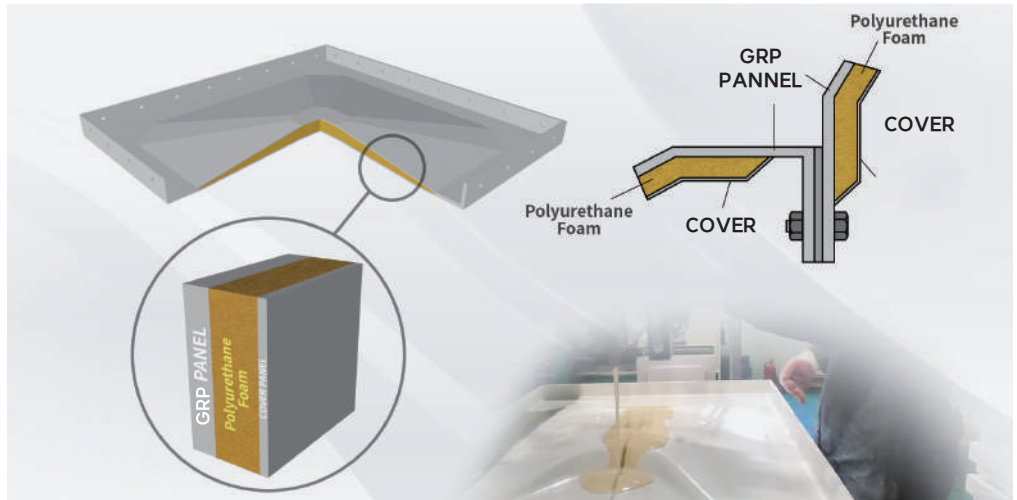
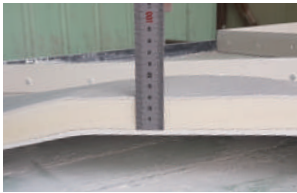
# PANEL CHEMICAL EXTRACTION



· Test Results can be different by yearly updates.

# PANEL OPTIONS

## INSULATED PANEL

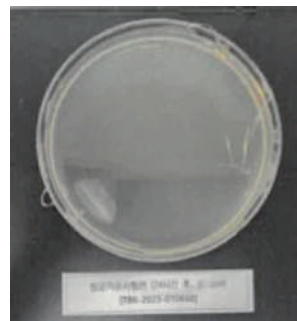


- Insulation Material : Polyurethane Foam
- Insulation center thickness is 25mm/40mm.
- Insulation thickness becomes thinner from center to side.

## ANTI-BACTERIAL PANEL



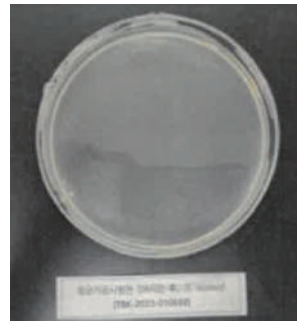
Non-processed specimen  
(After 24 hours, E. coli)



Anti-bacterial processed specimen  
(After 24 hours, E. coli)



Non-processed specimen  
(After 24 hours, S aureus)

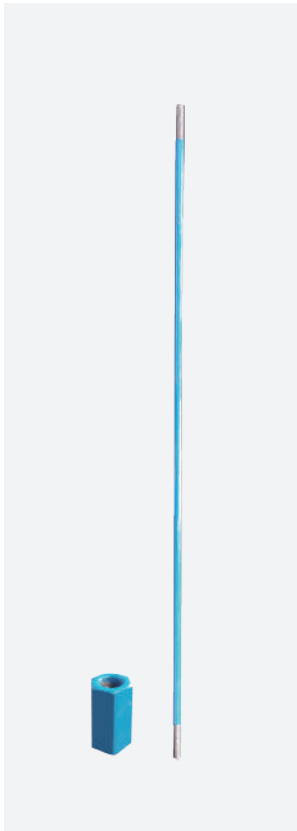


Anti-bacterial processed specimen  
(After 24 hours, S aureus)

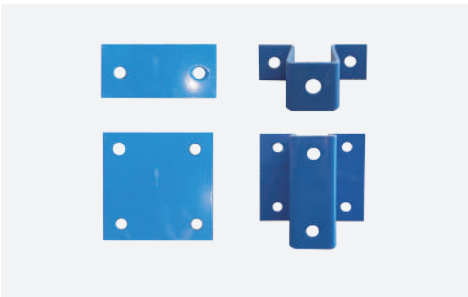




# INTERNAL REINFORCEMENT



External brackets



Internal brackets



External angle bar & flat bar



Internal angle bar & flat bar

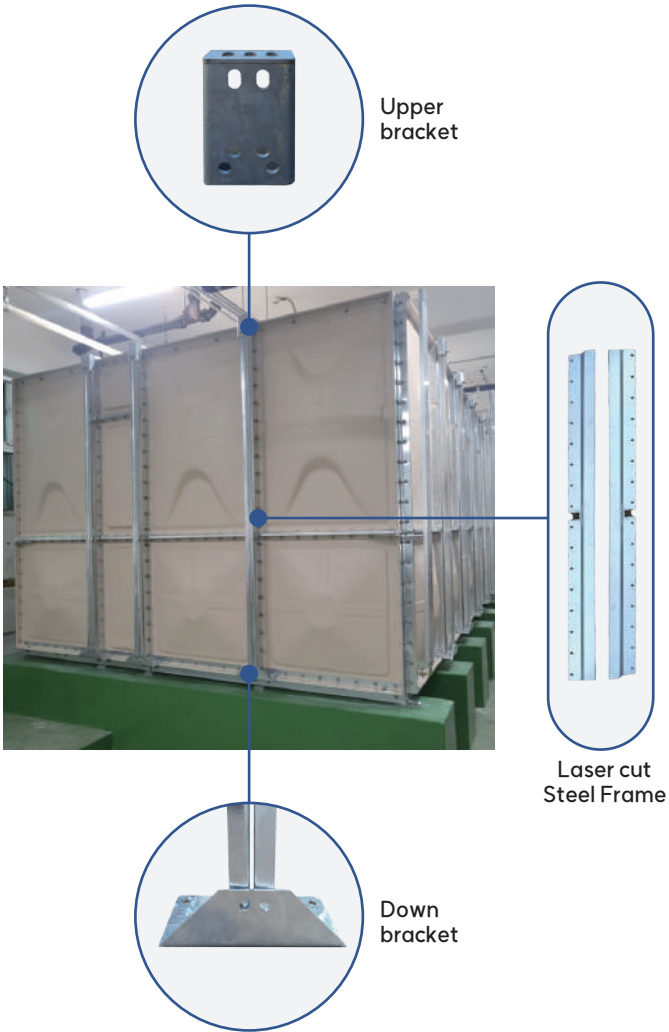
# EXTERNAL REINFORCEMENT



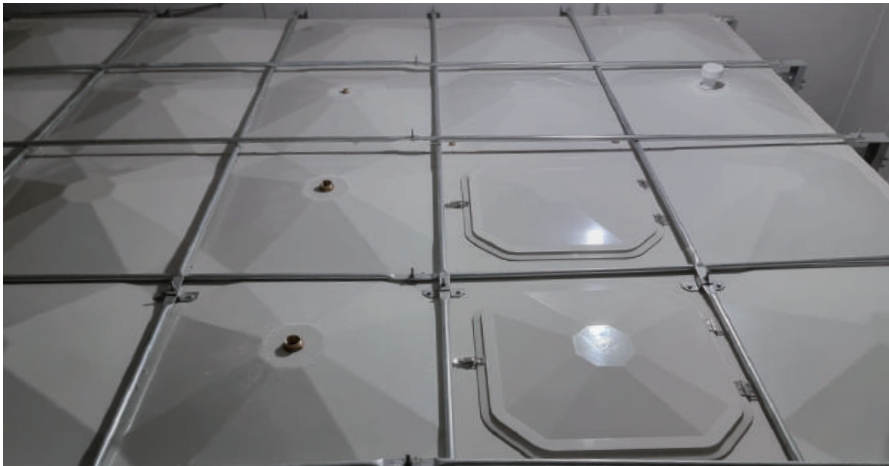
Steel poles on roof



Tank inside (No Tie-rods)



# COMBINED REINFORCEMENT



Steel poles on roof



External brackets



External square pipes



Internal tie-rods



# INSTALLATION SITE



## OVERSEAS INSTALLATION SITES

BAHRAIN, JORDAN, KUWAIT,  
OMAN, QATAR, UAE, INDONESIA,  
SRILANKA, THAILAND, VIETNAM,  
CHINA, INDIA, CROATIA, SERBIA,  
USA, ETC.



# OTHER ACCESSORIES



INTERNAL / EXTERNAL LADDERS



ROOF SUPPORT



LEVEL INDICATOR



AIR VENT

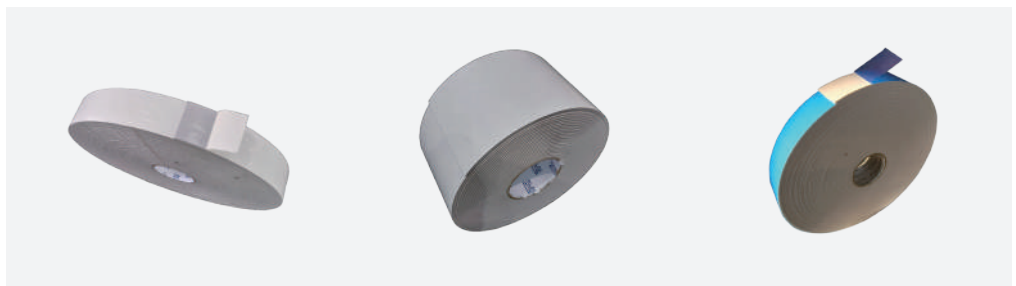
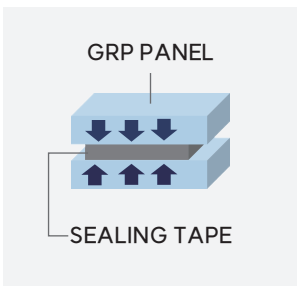


CORNER FRAME BRACKET



CORNER FRAME

ITEM	MATERIAL	SIZE
INTERNAL LADDER	GRP/STS304/STS316	1.5mH~5.0mH
EXTERNAL LADDER	HDG/STS304/STS316	1.0mH~5.0mH
ROOF SUPPORT	GRP	1.0mH~5.0mH
LEVEL INDICATOR	Aluminum+Urethane Hose	1.0mH~5.0mH
AIR VENT	ABS+Mesh insect guard	50A, 100A
CORNER FRAME	HDG	1.0/1.5/2.0mH



SEALING TAPE

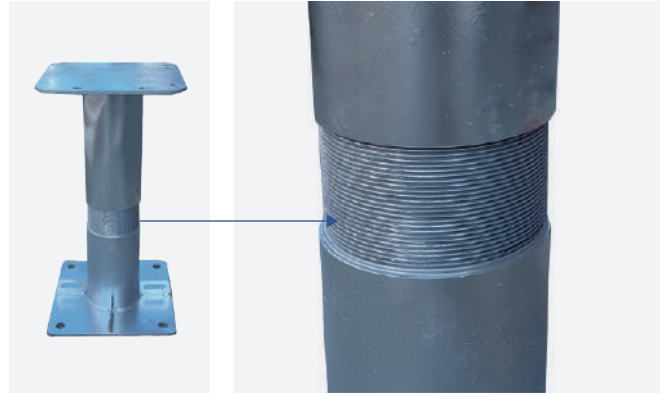
ITEM	MATERIAL	COLOR	SIZE	UNIT	POSITION
SEALING TAPE	PVC	Gray	50mmW x 30m	Roll	Wall&Bottom panel, Brackets
		Gray	120mmW x 30m	Meter	Corner frame
		Black	30mmW x 30m	Roll	Roof panel (optional)
	EPDM	White	53mmW x 30m	Roll	Wall&Bottom panel, Brackets
		White	130mmW x 30m	Meter	Corner frame

# OPTIONS

## STEEL BASE FRAME



GENERAL STEEL BASE FRAME  
(300/400/500 mm)



HEIGHT-ADJUSTABLE STEEL BASE FRAME  
(530mm ± 40mm / or customizing)

## HANDRAIL & HOOP GUARD



HANDRAIL SIZE	MATERIAL
1m on each side from manhole panel or Whole side of tank	HDG
	STS304
	STS316

HOOP GUARD SIZE	MATERIAL
Tank height 2~5mH	HDG
	STS304
	STS316

## FITTING



SOCKET SIZE	MATERIAL
15A, 20A, 25A, 32A, 40A, 50A	BRASS

FLANGE SIZE	MATERIAL
65A, 80A, 100A, 125A, 150A, 200A	ABS
250A, 300A, 350A, 400A, 450A, 500A	FRP (customizing)



# PRODUCTION PROCESS

## STEEL ACCESSORIES



Cutting



Drilling



Shearing



Punching



Bending



Pressing



Welding

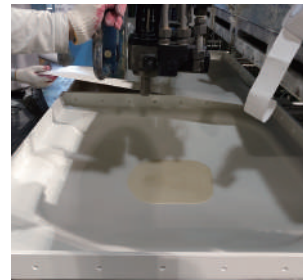


Galvanizing (outsourcing)

## GRP PANEL



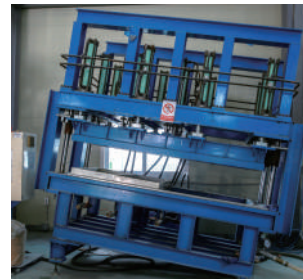
Pressing



Insulation (Option)



Slotting



Hydrostatic Pressure Test



Packing, Loading & Shipping

# INSTALLATION PROCESS



Site Check & Materials Take In



Install Skid Steel Base



Attach Nozzles & Sealing Tape



Corner Frame Assembly



Side Panel Assembly



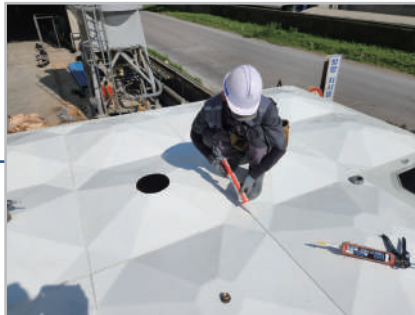
Bottom Panel Assembly



Roof Panel Assembly



Roof Support, Tie-rod, Internal Ladder Assembly



Roof Panel Sealant Finishing



Finish, Tank Check



Cleaning



External Ladder Assembly

· Installation process may differ depending on site conditions.

WE CONTAIN YOUR WATER



DOORI. CO., LTD.

ADDRESS : 911-1, Geumbak-ro, Daechang-myeon, Yeongcheon-si, Gyeongsangbuk-do, South Korea (Postal Code: 38911)

TEL : +82-53-761-1554 / FAX : +82-54-335-1554

WEBSITE : [www.dooritank.co.kr](http://www.dooritank.co.kr)

EMAIL : [drmrjin5523@dooritank.co.kr](mailto:drmrjin5523@dooritank.co.kr)